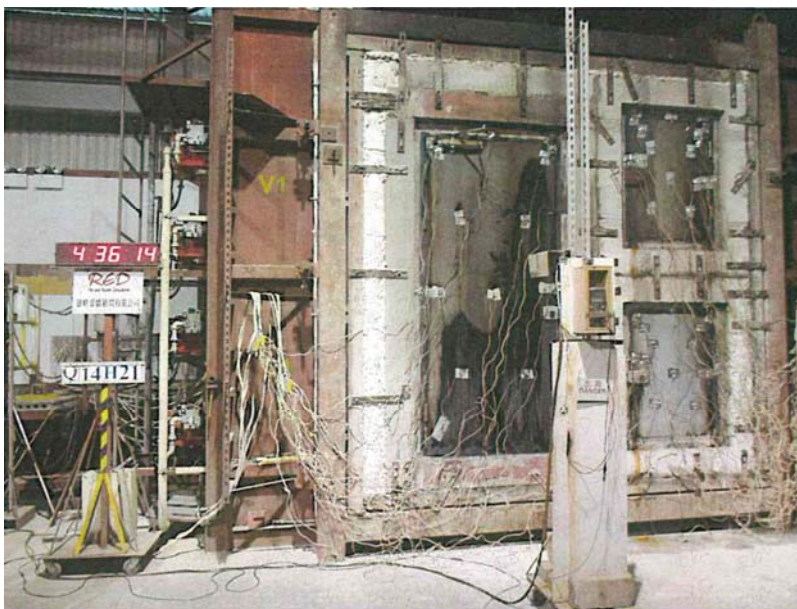
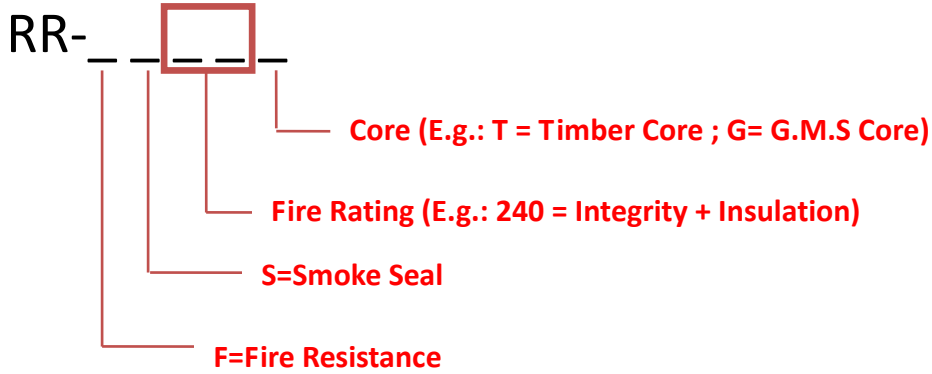




Fire-Resistance - Fully Insulated - Smoke Control

FRR(-/240/240) - Swing Door Series

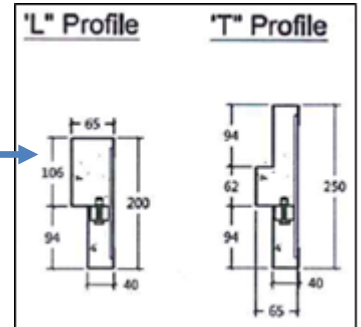




Fire-Resistance, Fully Insulated & Smoke-Tight Door

Model:	RR-F240G	RR-FS240G
Fire Test Standard: BS EN 1634-1:2008 ;		
Smoke Control Test Standard: BS EN 1634-3:2004 (Sm & Sa)		

FRR^(Note1):		FRR(- / 240 / 240)
Type:		Single / Double / Unequal Door Leaf
		Single Acting
Door Leaf Core:		Metal
Each Door Leaf Size	Thickness:	82mm
	Max. Width:	1150mm
	Max. Height:	2760mm
	Max. Area:	2.88m²
Door Frame Material:		Metal
Smoke Tight^(Note2):		- ✓

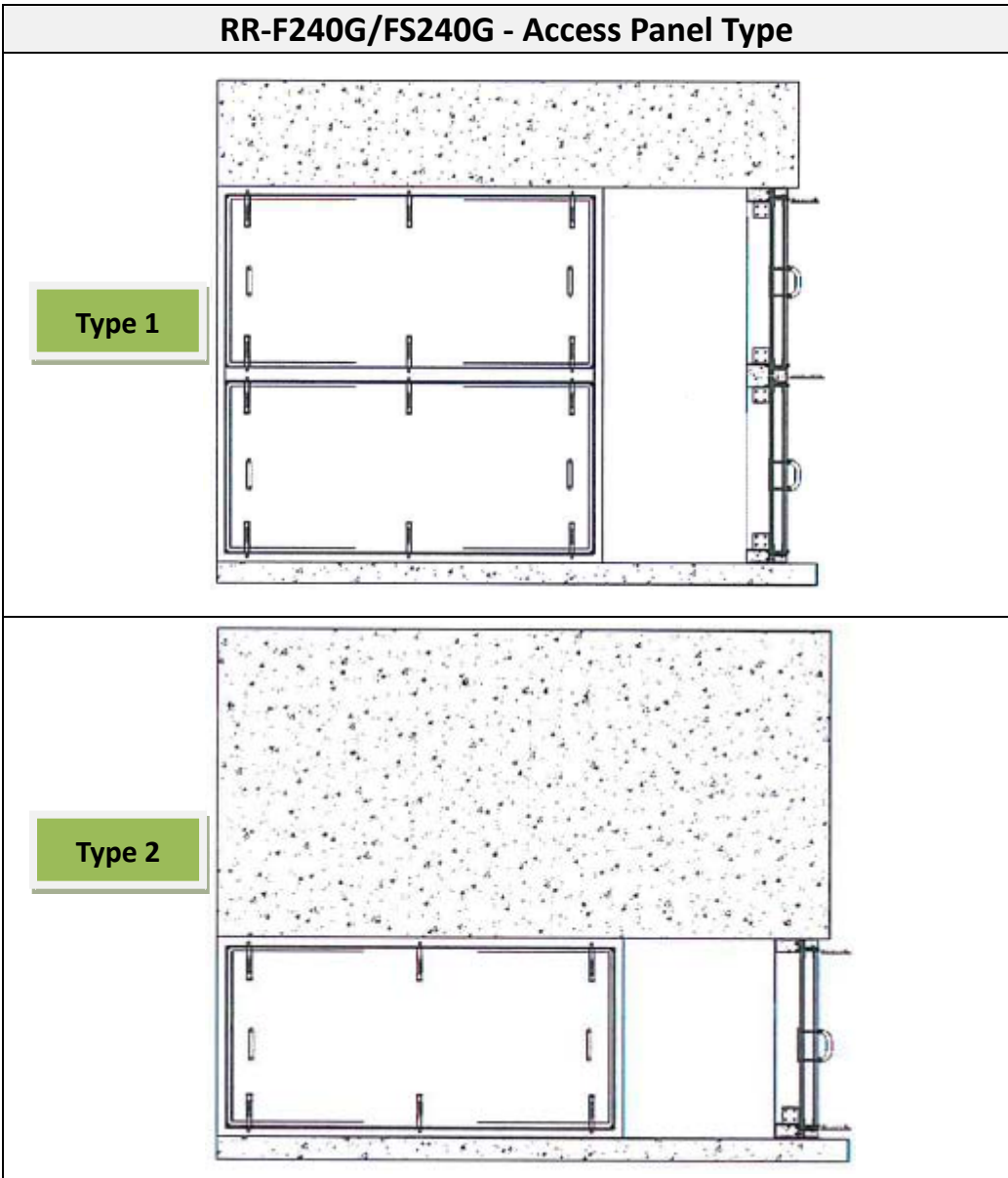


Supply w/ Vision Panel Spec.		
Vision Panel Size	Door Leaf Thickness:	90mm
	Vision Panel Thickness:	75mm
	Max. Width:	155mm
	Max. Height:	690mm
	Max. Area:	0.096m²
*Available in square, triangular, rectangular & circle's shape vision panel on door leaf restricted by the size in this table		

(Note1) FRR (Stability/Integrity/Insulation)

(Note2) Smoke Leakage Test in medium & ambient temperature

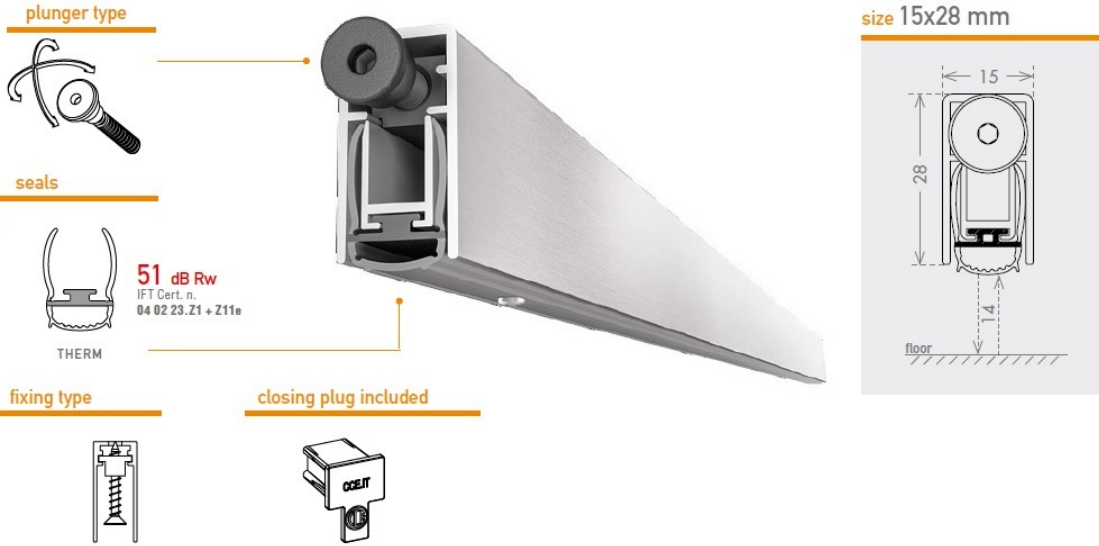
Supply w/ Transom Panel Spec.		
Transom Panel Size	Door Leaf Thickness:	90mm
	Transom Panel Thickness:	90mm
	Max. Width:	Depends on
	Max. Height:	Door Leaf Size
	Max. Area:	*Contact us*



Acoustic (Smoke) Seal

Location: Door Leaf Bottom (Concealed)

Brand: CCE(ITALY) – ASPLU



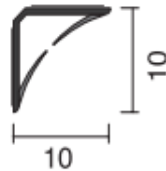
***This seal's inner profile can be pulled out from hinge side**

^Pull out from lock side are also available (Upon from request)

Jamb (Smoke) Seal

Location: Rebate

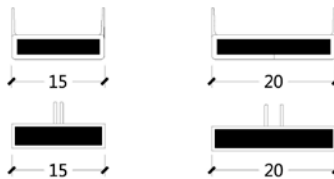
Brand: Lorient - LAS1010 (Batwing®)



Intumescent Fire Seal



Intumescent Fire & Smoke Seal





Ironmongery (Standard):

- Lockcase: CISA 52710 (Mortise Lockcase Series)
- #304 / 316 Bullet Hinges
- Pivot Hinge: IVES (Restricted door height: 2200mm)
- S.S Flush Bolts

Optional Ironmongery (Surface Mount):

- Kicking Plates
- Pull Handle
- Panic Bolt
- Door Guard Chain

Cladding (Finishing)

- Wood Veneer (Lacquer / Spray Paint Finish)
- Laminate Plastic Sheet
- #304 / #316 Stainless Steel (Satin / Mirror Finish)
- Galvanized Mild Steel (G.M.S.)
- Aluminum

^Above claddings Max. thk: 1.5mm (Each side)

- Travertine Stone

^Hinges loading must adequate for the loading

