

INSULATED FIRE STEEL SHUTTER

- Comply with BS EN 1634-1:2008
- Achieve FRR(-/240/120)
- No fabric material on surface for insulation

IFSS 120

RED
Fire and Facade Consultants



Sole Distributor:

戶信防火隔音建材有限公司
R & R FIRE & SOUND PROOF BLDG. MATERIALS LIMITED
香港 葵涌大連排道35-41號金基工業大廈4A室
Unit A, 4/F, Gold King Industrial Building,
35-41 Tai Lin Pai Road, Kwai Chung, Hong Kong

Tel: (852) 2398 8518
Email: andychoi@firedoor.com.hk

INSULATED FIRE STEEL SHUTTER



UP TO
120 minutes | FIRE Resistance & Insulation

Insulated Fire Steel Shutter (IFSS120) is tested to BSEN 1634-1: 2008 with 4 hours fire rating integrity and 2 hours insulation value.

The single layer panels are designed to compartmentalize and seal off the toughest fire outbreak; offering maximum protect and isolate against fire and heat. The unique design only required single barrel and single panel which only required minimum guide space.

During normal circumstances, IFSS120 is always in open position to allow traffic to pass and only to closed via gravity through fusible link or fire alarm activation upon fire outbreak.

IFSS120 is commonly installed in places such as schools, industrial opening, stalls, malls and car parks where fire hazard can be a concern.



Model	Fire Rating Integrity [E]	Fire Rating Insulation (I)
IFSS 120	4 Hour	2 Hour



Before Test



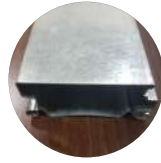
After Test

Distinctive Features



High Standard of Fire-Rating

Ensues highest standard of fire safety in the industry with Fire integrity and insulation up to 4 hours. Tested to SS489:2001/BS 476/ BSEN1634-1:2008. IFSS compartmentalizes and isolate the fire



Bigger, Larger, Wider

Single span up to 14.5 x 7.5 in dimension, this caters to any large openings in the market.



Fire Activation Via Fusible Link

IFSS has a fusible link that melts at 69 °C, thereby causing the shutter to slide down freely under gravity. This is a fail-safe mechanism.



Operation Versatility

IFSS can be manually or automatically operated by using hand chain or control box respectively.



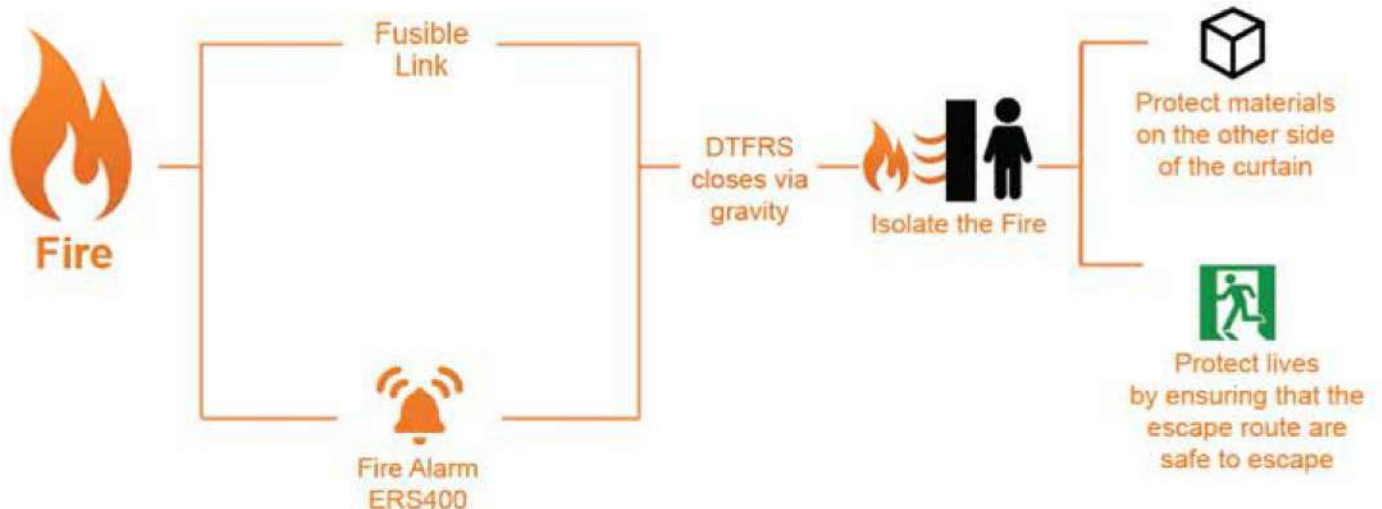
Fire Activation Via Alarm

Upon activation of fire alarm (ERS400), the alarm will activate the shutter to operate and close to the end.



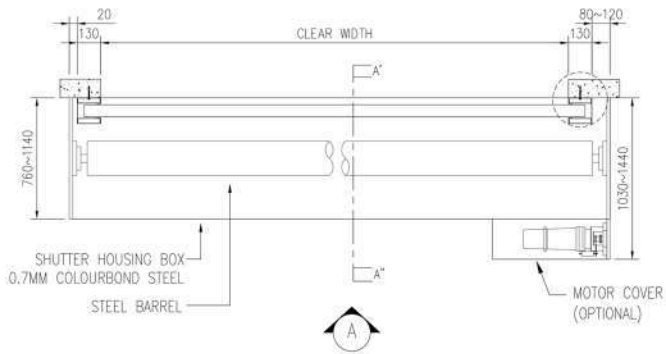
Intelligent System (IS)

IS has a built-in Brake Renagement Device that stops the shutter once it touches the ground, this will protect the shutter and the ground from any damages. In addition, IS will automatically reset itself after the fire alarm is switched off, this conveniences the user as no physical reset is required.

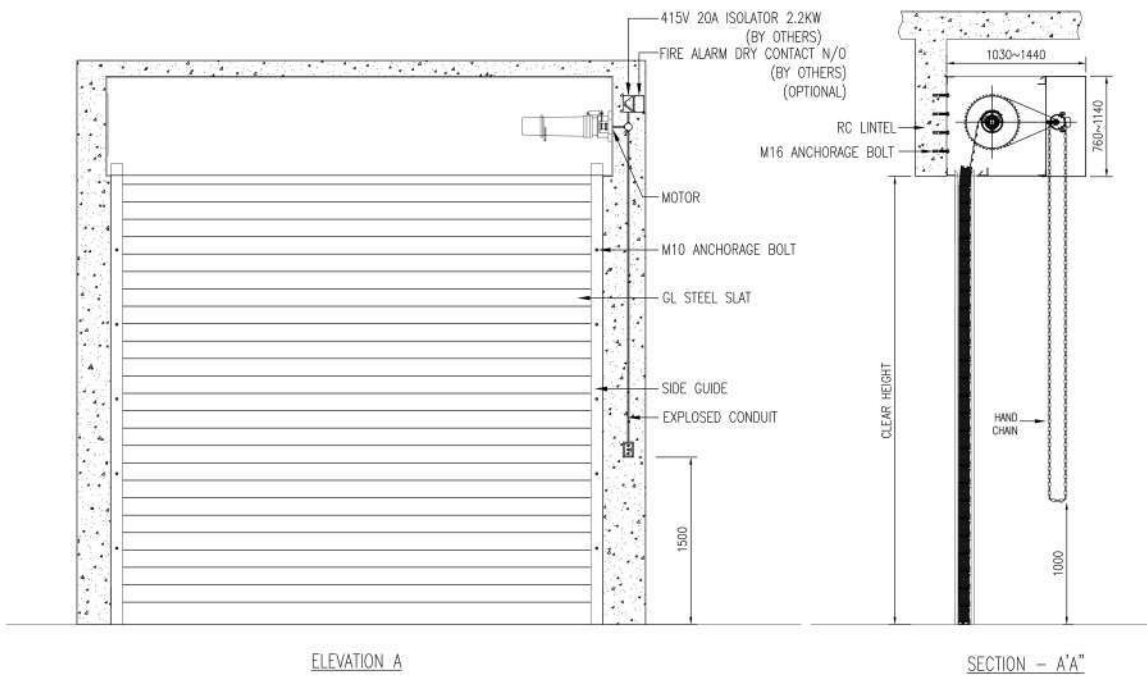


Typical Drawing

Insulated Fire Steel Shutter Component



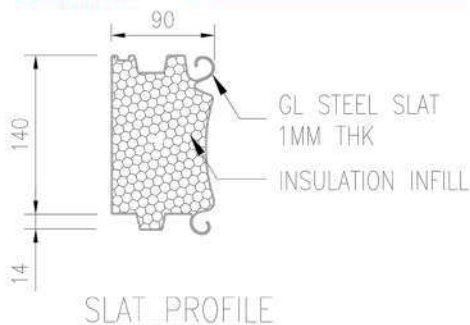
PLAN OF MOTORISED INSULATED FIRE STEEL SHUTTER (IFSS)



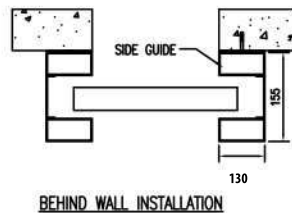
ELEVATION A

SECTION - A-A''

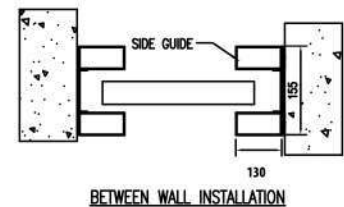
Slat Profile



Side Guide Fixing Position



BEHIND WALL INSTALLATION



BETWEEN WALL INSTALLATION

Material & Finish Details

Part	Material	Coating
Slat	90mm width steel with insulation fill, S/S	Galvalume, Colourbond, Powder Coated, Fluorocarbon
Side Guide	2mm Thick Mild Steel, S/S	Electro-galvanized, Colourbond, Powder Coated, Fluorocarbon
Shutterhood Cover	Mild Steel, S/S	Electro-galvanized, Colourbond, Powder Coated, Fluorocarbon
Motor Cover	Mild Steel, S/S	Colourbond, Powder Coated, Fluorocarbon

*Refer DNT Chart for fluorocarbon colour options

*Refer to oxyplast chart for powder coating colour option

Motor Specifications

Model	DT-300	DT-400	DT-500	DT-700	DT-1000	DT-1500	DT-2000	DT-3000
Direct Lifting Load (kg)	300	400	500	700	1000	1500	2000	3000
Operation mode	Electric, AC							
Manual Function	Hand Chain Pulley							
Power (hp)	0.20	0.28	0.42	0.47	1.00	1.50	2.00	3.00
Power (W)	150	210	310	350	750	1000	1500	2200
Voltage (V)	230(V)	230(V)	230(V)	230/415(V)	230/415(V)	415(V)	415(V)	415(V)
Current (A)	0.63	0.88	1.29	1.46	3.13	3.3	3.5	5
Poles (P)	4P							
Rating Time	5 minutes							
Rotation R.P.M	1720							
Gear Transmission	Single-Row-Off-Centre Gear				Double-Layer Planetary Gear			
Gear Ratio	45:1				68:1			
Brake and Clutch System	Autonomous Unit				Dual Brake			
Bracket	Chain Driven							
Sprocket	9T	9T	9T	10T	11T	11T	11T	11T
Chain	#50		#60 / #80	#60 / #80	#80	#80 / #100	#100	
Length (mm)	445	445	470	570	615	635	660	690

*Thermal Overload 100°C

Shutter Specifications

Item	Model	IFSS 120
Fire Integrity and Fire Insulation		4 Hours Fire Integrity and 2 Hours Fire Insulation
Maximum Single Span		14000 (Width)
		7500 (Height)
Main Body	Side Guide	W155 x L130 (1.5mm thick)
	Shutterhood	710 x 980 to 1170 x 1440
	Panel	90
	Bottom Bar	"I" Shape

*All dimensions in mm.

Components

Basic Components



Push Button Box
Electrically operate
(Mechanical)



Fusible Link
Fire activation



Motor
Roller shutter
motorised operator

Optional Components



UPS
For emergency
back-up battery
power



Remote
Handheld controller
to operate shutter



Motor Cover
Protection Cover for
motor



BMS
To monitor the
shutter position
(open/ close/ fault)
from BCC/FCC

Others
Wind Lock
Explosion Proof
Remote Interfacing System

Remarks:

- Due to the properties of printing ink, the colour of the product may differ from the actual color.
- The specifications are subject to change without notice for improvements.

RED
Fire and Facade Consultants



Sole Distributor:

戶信防火隔音建材有限公司
R & R FIRE & SOUND PROOF BLDG. MATERIALS LIMITED
香港 葵涌大連排道35-41號金基工業大廈4A室
Unit A, 4/F, Gold King Industrial Building,
35-41 Tai Lin Pai Road, Kwai Chung, Hong Kong

Tel: (852) 2398 8518
Email: andychoi@firedoor.com.hk